

HCD-GNX700/GNX800

SERVICE MANUAL

Ver. 1.1 2006.09

E Model
HCD-GNX700/GNX800
Australian Model
HCD-GNX800



Photo: HCD-GNX800

- HCD-GNX700/GNX800 is the Amplifier, CD player, tape deck and tuner section in MHC-GNX700/GNX800.

CD Section	Model Name Using Similar Mechanism	HCD-GN880
	CD Mechanism Type	CDM74KF-F1BD81A
	Base Unit Name	BU-F1BD81A
	Optical Pick-up Name	KSM-215DCP/C2NP
TAPE Section	Model Name Using Similar Mechanism	HCD-GNX80
	Tape Transport Mechanism Type	CWN42FF601

SPECIFICATIONS

Amplifier section

HCD-GNX800

The following are measured at AC 120, 220, 240 V, 50/60 Hz
Front/Surround speaker

DIN power output (rated) 180 + 180 watts
(6 ohms at 1 kHz, DIN)

Continuous RMS power output (reference)
225 + 225 watts
(6 ohms at 1 kHz, 10% THD)

Subwoofer

Continuous RMS power output (reference)
200 watts
(8 ohms at 100 Hz, 10% THD)

HCD-GNX700

The following are measured at AC 120, 220, 240 V, 50/60 Hz
Front speaker

DIN power output (rated) 170 + 170 watts
(6 ohms at 1 kHz, DIN)

Continuous RMS power output (reference)
220 + 220 watts
(6 ohms at 1 kHz, 10% THD)

Subwoofer

Continuous RMS power output (reference)
160 watts
(8 ohms at 100 Hz, 10% THD)

Inputs

VIDEO/MD (AUDIO) IN (phono jacks):
voltage 250/450 mV,
impedance 47 kilohms
TV (AUDIO) IN (phono jack):
voltage 250 mV,
impedance 47 kilohms
MIC (phone jack):
sensitivity 1 mV,
impedance 10 kilohms

Outputs

PHONES (stereo mini jack): accepts headphones of 8 ohms or more
FRONT SPEAKER/SURROUND SPEAKER/
SUBWOOFER OUT: Use only the supplied speaker

– Continued on next page –

Mini Hi-Fi COMPONENT SYSTEM

9-887-068-02
2006102-1
© 2006.09

Sony Corporation
Home Audio Division
Published by Sony Techno Create Corporation

SONY®

SECTION 8 EXPLODED VIEWS

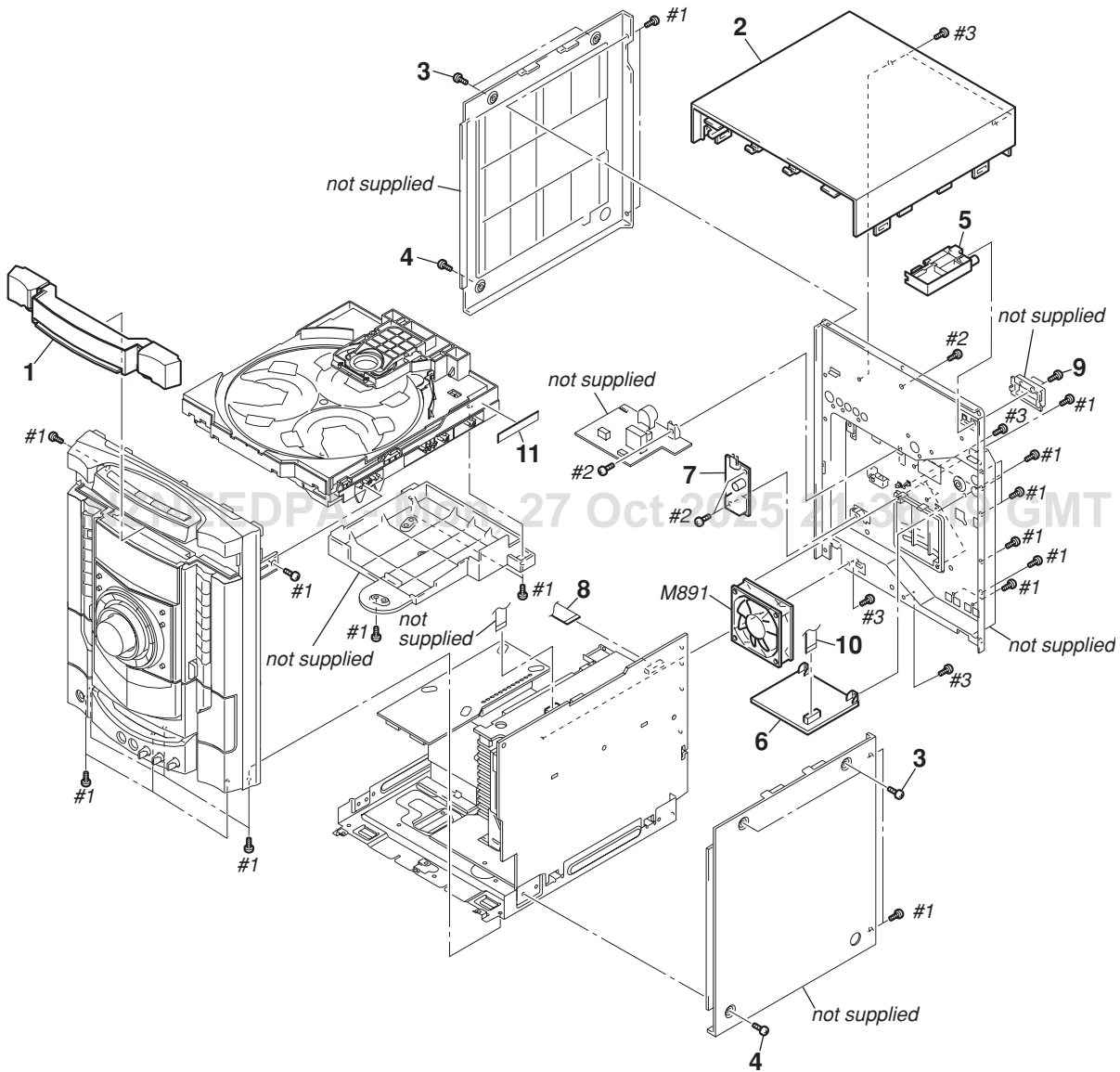
NOTE:

- -XX, -X mean standardized parts, so they may have some differences from the original one.
- Items marked "*" are not stocked since they are seldom required for routine service. Some delay should be anticipated when ordering these items.
- The mechanical parts with no reference number in the exploded views are not supplied.

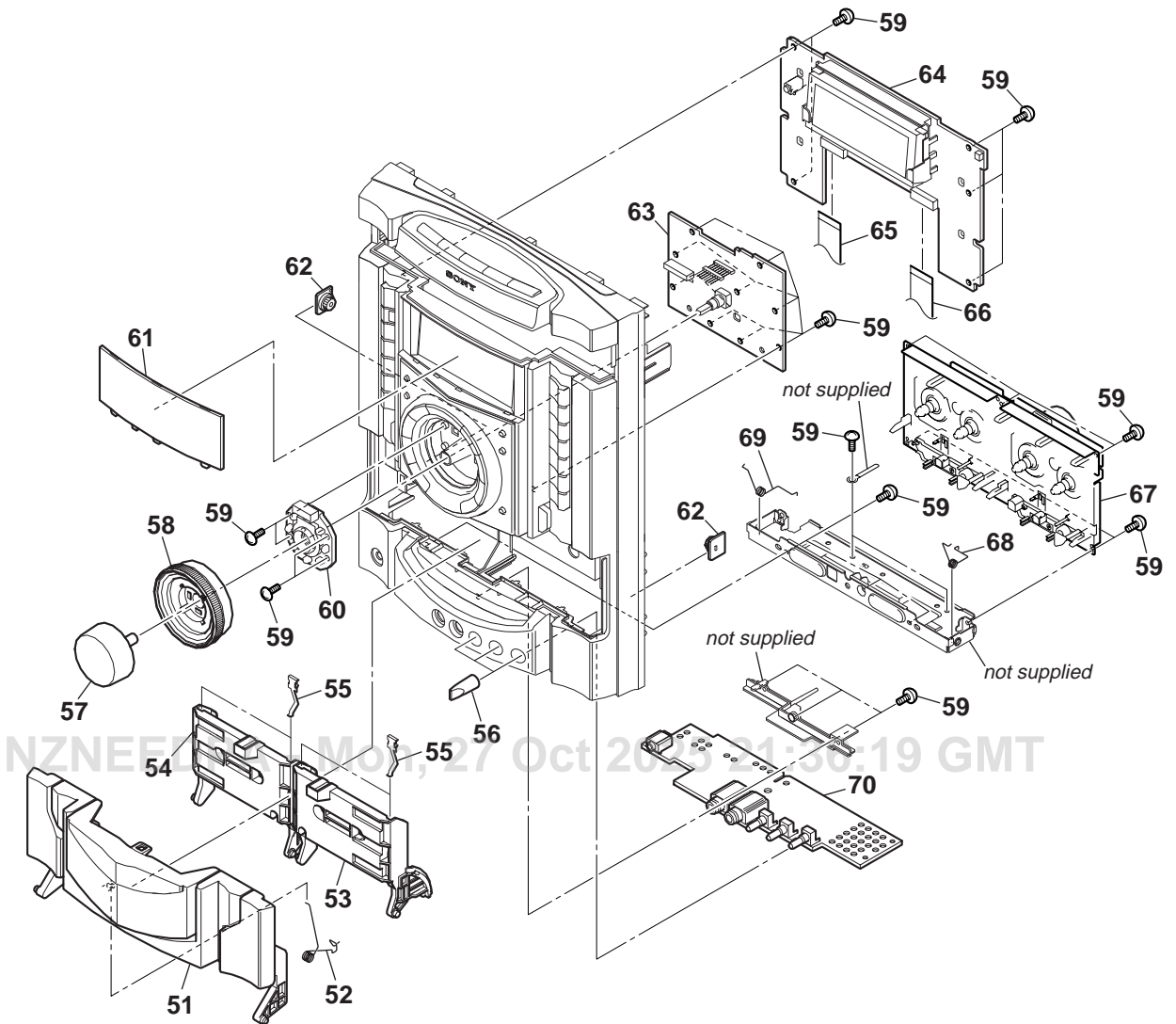
- Hardware (# mark) list and accessories are given in the last of this parts list.
- Abbreviation
 AR : Argentina model
 AUS: Australian model
 E2 : 120V AC Area in E model
 E3 : 240V AC Area in E model
 E51 : Chilean and Peruvian model

The components identified by mark Δ or dotted line with mark Δ are critical for safety.
 Replace only with part number specified.

8-1. CASE (TOP), BACK PANEL SECTION

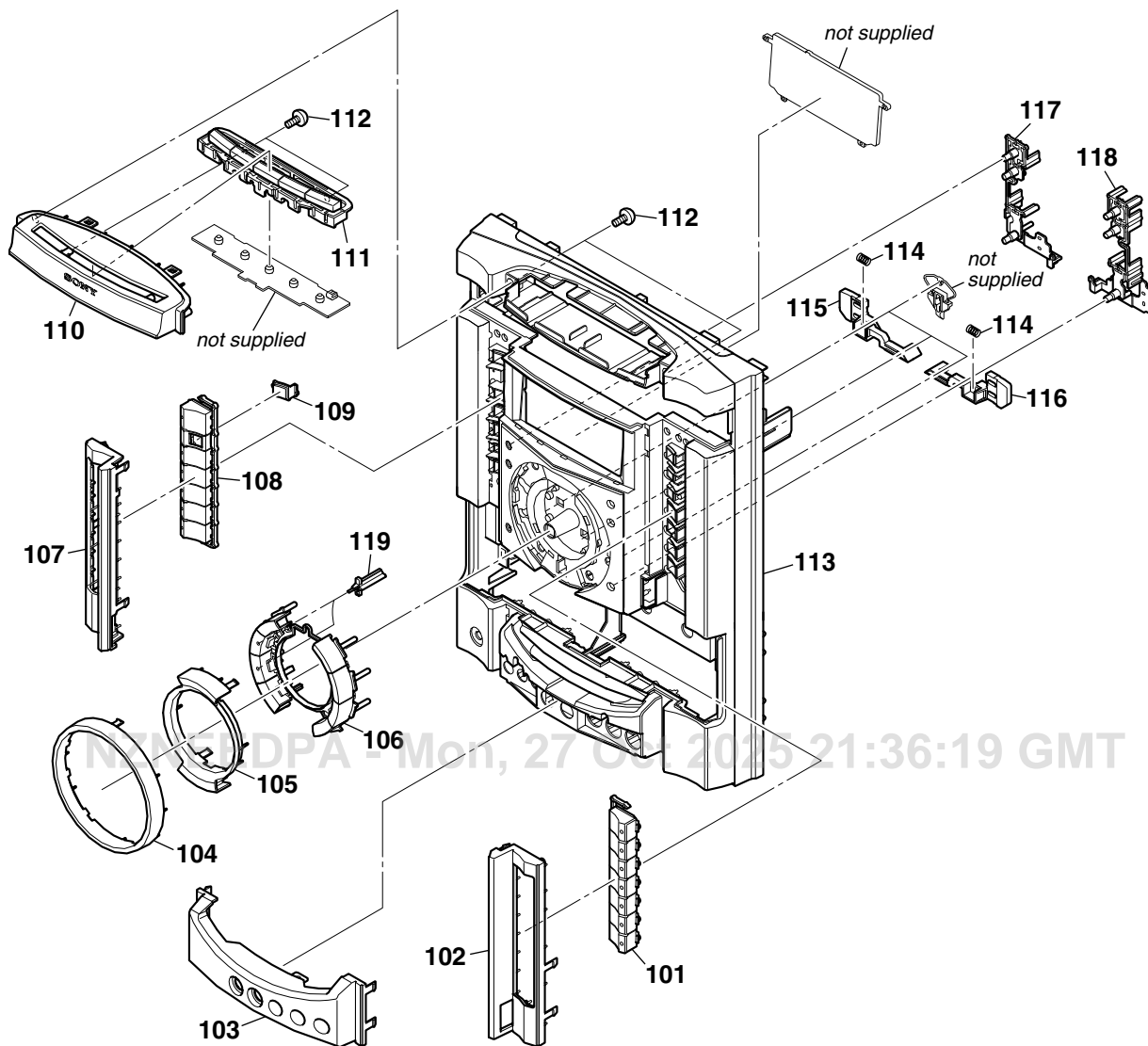


8-2. FRONT PANEL SECTION-1

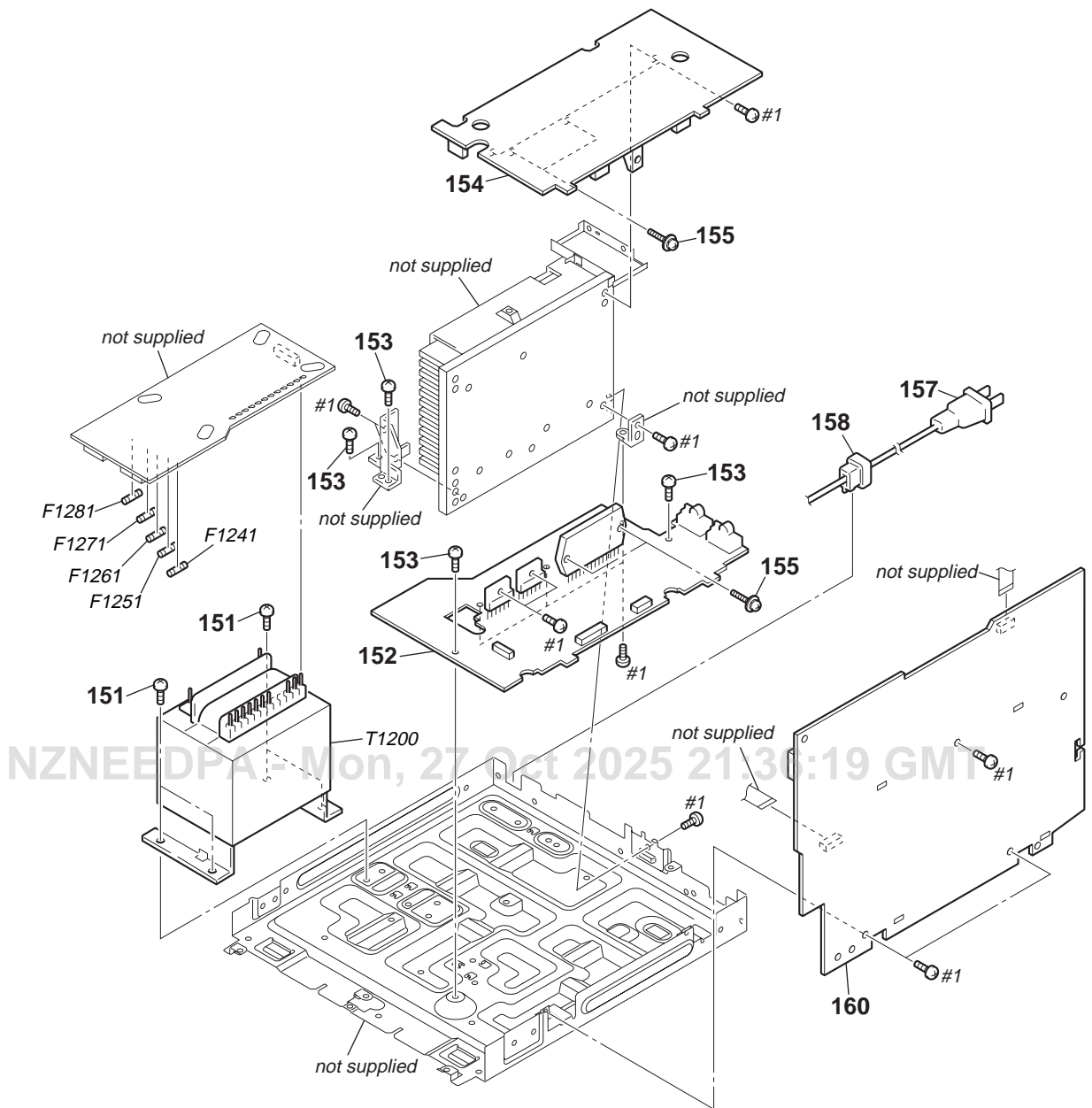


HCD-GNX700/GNX800

8-3. FRONT PANEL SECTION-2



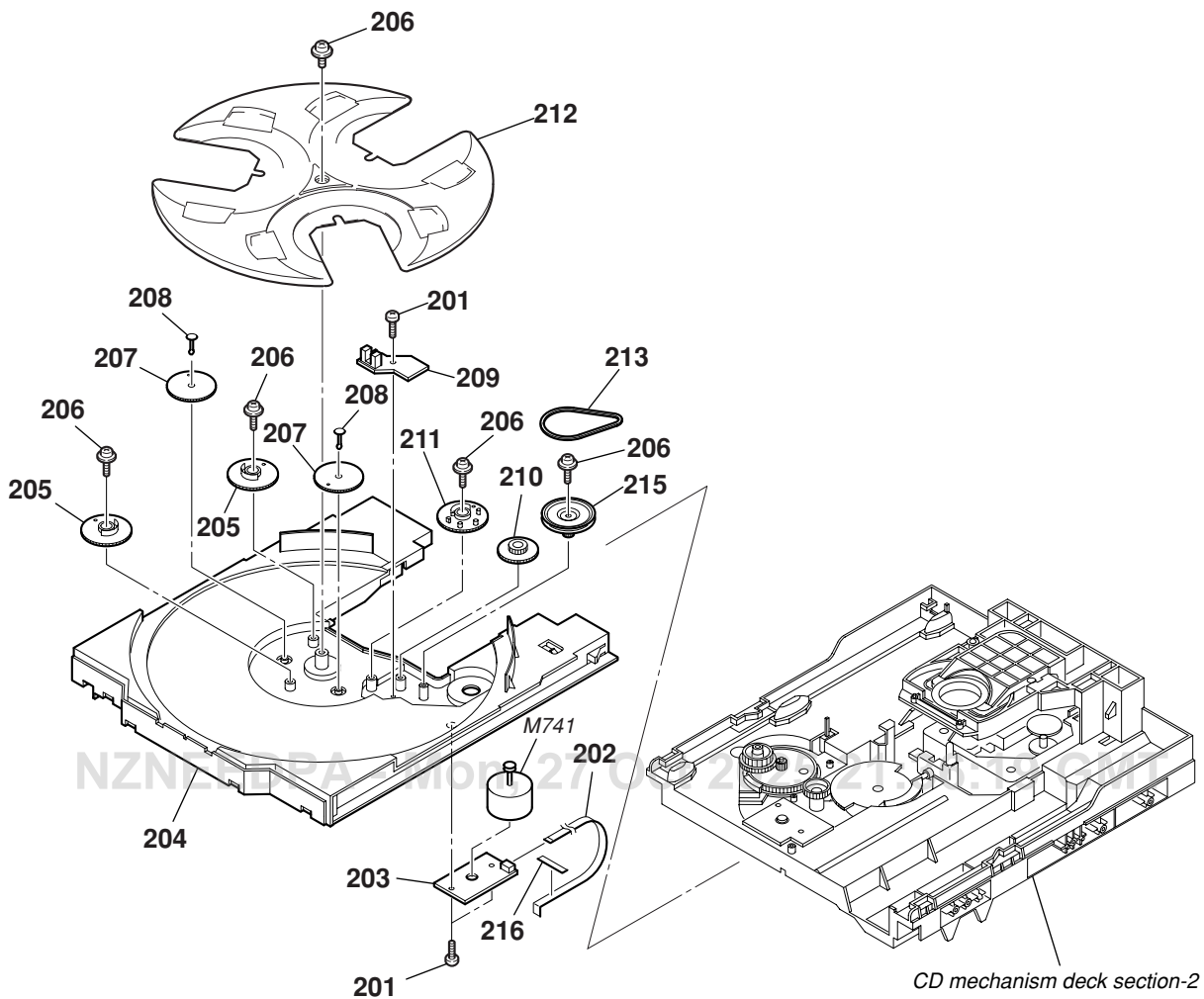
8-4. CHASSIS SECTION



NZNEEDPA - Mon, 27 Oct 2025 21:30:19 GMT

HCD-GNX700/GNX800

8-5. CD MECHANISM DECK SECTION-1 (CDM74KF-F1BD81A)



8-6. CD MECHANISM DECK SECTION-2
(CDM74KF-F1BD81A)

